

RTH

6.31 EC



CONSTRUCTION



LOGISTICS

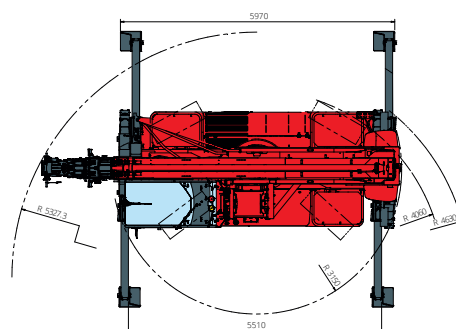
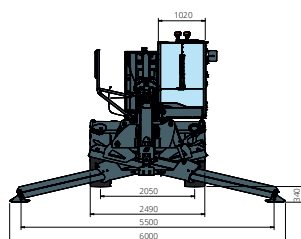
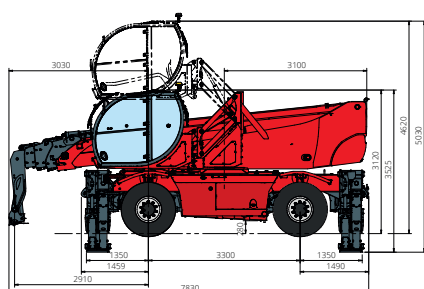
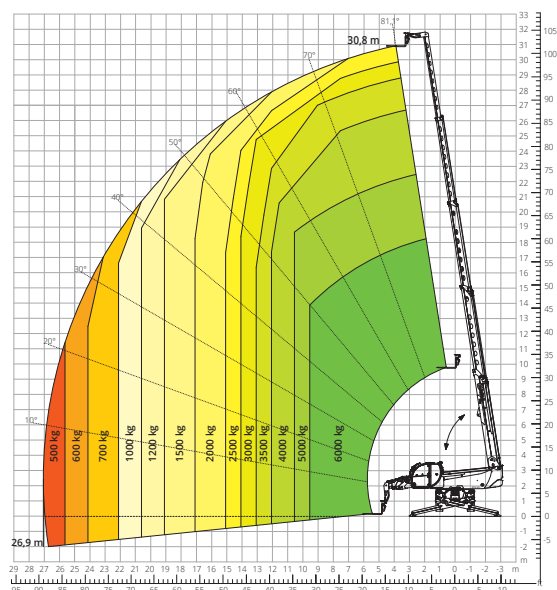


EVENTS
AND FILM



FORESTRY

Load chart on fully
extended stabilizers



| | | | |
|---------------------------------|---|---|------------------------------|
| Machine model | Rotating telescopic handler | RTH 6.31 EC | |
| | Maximum lifting capacity | 6,000 kg | |
| | Maximum lifting height | 30.80 m | |
| | Maximum reach | 26.90 m | |
| | Rotation | 360° (continuous) | |
| Stabilisers | Type | Scissor stabilisers with single telescopic extension (Magni patent) | |
| Engine | Model | Volvo TAD 582 VE Stage V | Volvo TAD 552 VE Stage IIIA |
| | Rated power | 160 kW (218 hp) at 2,300 rpm | 160 kW (218 hp) at 2,200 rpm |
| | Maximum torque | 925 Nm at 1,380 rpm | 910 Nm at 1,450 rpm |
| | Displacement | 5,130 cm³ | |
| | Cylinders | 4 in line | |
| | Engine type | Turbocharged direct injection diesel | |
| | Cooling system | Water – intercooler | |
| Transmission | Type | Hydraulic | |
| | Maximum pressure | 480 bar | |
| | Gearbox | 2 speeds forward-reverse | |
| Axles and brakes | Type | Axles with planetary gearboxes | |
| | Front axle | Oscillating and steering with levelling, +/-8° | |
| | Rear axle | Oscillating and steering with hydraulic lock | |
| | No. of steering wheels | 4WS | |
| | Steering mode | Frontal/Concentric/Crab | |
| | Service brake | Hydraulically operated wet multi-disk brakes on each axle | |
| | Parking brake | Hydraulic with negative action | |
| | Tyre sizes | 445/65 R22.5 | |
| Performance | Max. travel speed | 40 km/h (limited depending on the country of destination) | |
| | Drawbar pull | 89 kN | |
| | Maximum mass towable on hook | 5,000 kg | |
| | Gradeability | 41% | |
| | Turning radius (at forks) | 6,730 mm | |
| Weights | Total unladen* | 23,700 kg | |
| | Front axle unladen (boom retracted and lowered)* | 11,100 kg | |
| | Rear axle unladen (boom retracted and lowered)* | 12,600 kg | |
| Tank and system capacities | Diesel fuel | 270 l | 270 l |
| | AdBlue | 40 l | / |
| | Hydraulic fluid | 160 l | 160 l |
| | Engine oil | 16 l | 16 l |
| | Coolant | 40 l | 40 l |
| Hydraulic circuit for movements | Circuit type | Load sensing | |
| | Service pump | Variable displacement | |
| | Max. hydraulic flow rate | 170 l/min | |
| | Max. boom head flow rate | 75 l/min | |
| | Max. working pressure | 350 bar | |
| | Distributor for boom and turret movements | SIL 2 electro-proportional valve | |
| | Movements control | 2 two-axis Danfoss joysticks with deadman safety device | |
| Standards met | 2006/42/EC: EU Machinery Directive 2016/1628: EU Regulation on the emissions of stage V engines EN 1459-X: Relating to standards on the safety requirements for variable reach machines EN 280/EN 280-1/EN 280-2: standards relating to mobile elevating work platforms (if available) ROPS/level 2 FOPS: relating to the standards for protective structures | | |

The data given in this brochure are provided for information purposes and are subject to change without prior notice.

All images are purely guideline and might not give an exact representation of the product.

*the stated weight refers to the vehicle unladen with standard equipment and may vary depending on the chosen configuration.